

# Enstone Primary School



New Parents' Presentation  
July 2025

# What is the Early Years Foundation Stage?

The Early Years Foundation Stage (EYFS) is the stage of education for children from birth to the end of the Reception year.

It recognises that children learn best through playing and exploring, active learning, creating and thinking critically.



Your child will be learning skills, acquiring new knowledge and demonstrating their understanding through **7 areas of learning and development**.

Children should mostly develop the **3 prime areas** first.

These are:

1. Communication and Language
2. Physical Development
3. Personal, Social and Emotional Development.

As children grow, the prime areas will help them to develop skills in **4 specific areas**. These are:

1. Literacy
2. Mathematics
3. Understanding the world
4. Expressive arts and design.



# PERSONAL, SOCIAL AND EMOTIONAL DEVELOPMENT

The children will be learning to:

- **Self-Regulate**

Show an understanding of their own and others feelings / Regulate their own behaviour / Set and work towards simple goals / Give focused attention / Follow instructions

- **Manage Self**

Confidence to try new activities and show independence, resilience and perseverance / Explain the reasons for rules / Manage own basic hygiene and personal needs / The importance of healthy food choices / Oral Health

- **Relationships**

Work and play cooperatively / Form positive attachments to adults and friendships with peers / Show sensitivity to their own and others' needs.



# COMMUNICATION AND LANGUAGE

## The children will be learning to:

### Listening, Attention and Understanding

- Listening attentively and respond to what they hear / Make comments / Ask questions to clarify their understanding / Holding conversations

### Speaking

- Participate in small group, class and one-to-one discussions / Offer explanations for why things might happen / Make use of introduced vocabulary from stories, non-fiction, rhymes and poems / Express ideas and feelings about experiences using full sentences, using past, present and future tenses



# PHYSICAL DEVELOPMENT

The children will be learning:



## Gross Motor Skills

- Negotiating space and obstacles safely / Strength, balance and coordination / Moving energetically

## Fine Motor Skills

- Pencil control / Using a range of small tools / Accuracy and care when drawing

# LITERACY

## The children will be learning:

### Comprehension

- Understanding what they have read / Anticipate key events / Use and understand recently introduced vocabulary

### Word Reading

- Sounds for each letter of the alphabet and diagraphs / Read words consistent with phonic knowledge by sound blending / Read aloud simple sentences and books

### Writing

- Write recognisable letters / Spell words / Write simple phrases and sentences that can be read by others



# MATHEMATICS

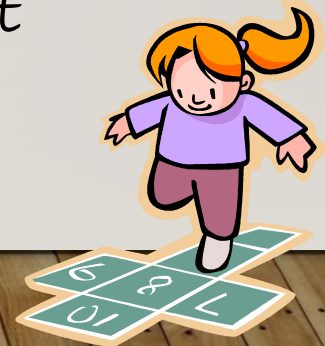
## The children will be learning about:

### Number

- Deep understanding of number to 10 / Composition of each number / Subitise up to 5 / Recall number bonds up to 5 / 10 including double facts

### Numerical Patterns

- Verbally count beyond 20 / Compare quantities up to 10 in in different contexts / recognising when one quantity is greater than, less or the same as the other quantity / Explore and represent patterns within numbers up to 10



# UNDERSTANDING THE WORLD

## The children will be learning about:

### **Past and Present**

- Talking about the lives of people around them and their roles in society / Similarities and differences between things in the past and now

### **People, Culture and Communities**

- Describing immediate environment using knowledge from observation, discussion, stories, non-fiction texts and maps / Similarities and differences between religious and cultural communities in this country/ Similarities and differences between life in this country and life in other countries

### **The Natural World**

- Observing the natural world / similarities and differences between natural world around them and contrasting environments / Important processes and changes in the natural world



# EXPRESSIVE ARTS AND DESIGN

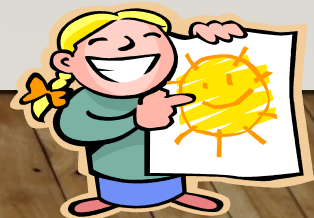
## The children will explore:

### Creating with materials

- Explore a variety of materials, tools and techniques / Sharing creations and explaining process / Props and materials within role play and stories

### Being Imaginative and Expressive

- Invent, adapt and recount narratives and stories with peers and teachers / Sing rhymes and songs / Perform songs, rhymes poems and stories / Move in time with music



# MONITORING PROGRESS

Each of the 7 areas of learning has its own set of 'Early Learning Goals' which determine what most children are expected to achieve by the end of Reception Class. These are taken from a document called 'Development Matters'.

## Online Journal

We use a program called 'Tapestry' to upload pictures of your child demonstrating learning behaviours which relate to the ELGs. You can look at and add to this from home.



# How can you find out how your child is getting on?

It is important that parents and the staff caring for your child work together. We want you to feel comfortable about exchanging information and discussing things that will benefit your child.

Mrs Griffith will greet you and your child at the hall door in the morning and then Mrs Moore, Miss Young and Miss Tuckey will be in the classroom to help the children settle in and get on with one of the morning activities.

Please do feel that you can discuss any issues that are concerning you with us as you drop your child off. However, if you would like a longer conversation, please make an appointment to see Mrs Griffith after school.



# The first few weeks

We will find out what the children already know and can do and use this information to help us plan for each child.

We would value any contributions you would like to make in helping us get to know your child's needs.

You will be invited to discuss your child's progress and adjustment to school within the first term, at parent's evening.



# A Typical Day in Glyme Class

- 8.40 Door open for morning activities
- 8.50 Register
- 9.00 Maths session
- 9.15 Continuous provision and adult led learning activities
- 10.15 Snack
- 10.30 Break
- 10.45 Phonics
- 11.00 Continuous provision and adult led learning activities
- 11.55 – 1.00 Lunch time
- 1.10 Afternoon registration
- 1.15 – 2.55 Continuous provision and adult led learning activity
- 2.55 Story time
- 3.10 Home time

# PLAYTIMES AND LUNCHTIMES

- Playtime is from 10:30am-10:45am
- Lunchtime is from 12:00pm -1:00pm

Children can bring in a packed lunch or you can order a school dinner.

- Please check that your child can open and close his/her own lunch box and that any drink containers are watertight and spill-proof. In warm weather a small ice pack is advisable as we have no refrigeration facilities for lunch boxes.

- **Please do not send nuts or seeds (i.e. peanuts) as there is a danger of choking on them and we do have children in school that have an allergy to nuts or seeds.** Please also ensure that grapes / small items like sausages are cut in half to avoid a choking hazard.

- At our school we promote healthy eating. Please look at the fat and sugar content of your child's food. We have the support of the school medical and dental service and more advice is available upon request.



# ACCIDENTS

- It is not uncommon for Reception children to wet themselves during their first year at school. When such an incident occurs, your child's wet uniform will be sent home in a plastic bag. If your child has their PE kit in school, we will use this first. If this is not the case, we use a spare set from school where possible. Please return the spares by the next week.
- Injury accidents are dealt with qualified first aiders. All Glyme staff are Paediatric First Aiders. You will receive a slip advising you of injury and treatment. If we feel we need to inform you before pick up a call will be made to you directly at time of accident.

# UNIFORM

- Children must wear correct uniform and school shoes every day.
- **Please ensure that your child's name is in all items of clothing, including shoes!**
- P.E kit and trainers must be kept in school and available every day.
- It can be a good idea to keep a change of underwear and socks in your child's P.E. kit bag, just in case of accidents.
- Please provide a sun hat/cap to be kept in school.
- Your child will be taking part in lots of interesting and sometimes messy experiences, so may come home dirty! It is all part of the fun!

# READING BOOKS

- Children will start off with a sharing book. Once they can blend and segment, they will receive decodable books from the 'Phonics Bug' collection.
- You will be given a diary to record comments in when you share/read a book with your child.

# MEDICAL MATTERS

- Any sickness, diarrhoea, must be followed by 48 hours absence.
- Any absence requires a telephone call on the first morning.
- Head lice (and occasionally threadworms) can happen! Please check regularly and treat as recommended.
- No medicines can be administered by staff unless there is a medical protocol in place for ongoing medical needs. (Please refer to our Medicines Policy)
- Children with asthma will be helped to take their inhaler. There is a special form to fill out to help us understand your child's asthma, what may trigger it and how to help.

# So, what can you do next to prepare your child for starting in September ?

- Encourage them to be more independent - putting on their own shoes, socks, trousers, learning to put on and pull off their jumpers (ensuring their jumpers are not too small).
- Teaching children the language that goes with these actions - pull, push, unzip, down, up.
- Encourage them to ask you rather than pull at things or tap. The greater their language communication the more they can express the support that they require.
- Teach them to pull their sleeves through on their jumpers and coats.
- How to hold a knife and fork and spoon for dessert. Learning to cut simple soft foods like fish fingers and vegetables.
- Using a knife to push food onto a fork - play games with small items like peas, sweetcorn to practice.
- Going to the toilet, pulling clothes out of the way, wiping themselves, flushing toilets and washing hands.
- Talk of school as a positive always - fun, friends, learn new things but with lots of help, remind them that you went to school.



# Please remember....

If you have any concerns or questions, we will be happy to help you.

Mrs Mann – Headteacher

Mrs Griffith – Glyme Class Teacher

Mrs Moore -Teaching Assistant

Miss Young – Teaching Assistant

Miss Tuckey –Teaching Assistant and assistant EYFS coordinator.

